

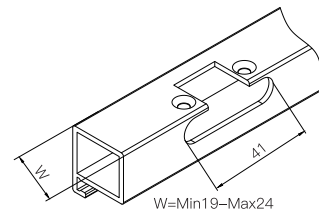
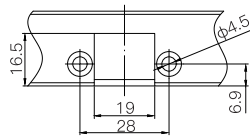
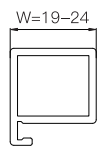
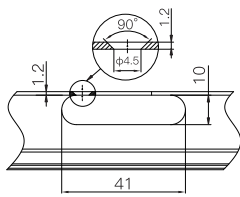
DOBRADIÇA CLIP ON INVISÍVEL 105° COM PISTÃO PARA PERFIL DE ALUMÍNIO

INSTRUÇÕES PARA INSTALAÇÃO

Ângulo de abertura: 105°
Padrão furação: 28/6.9mm
Espessura de perfil: 19-24mm
Acabamentos: Onix & Zincado



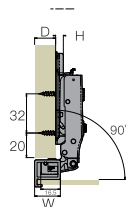
Usinagem Perfil



Dimensões de instalação

H = Altura calço
D = Recobrimento
A = Folga entre porta e painel lateral
W = Largura do perfil de alumínio

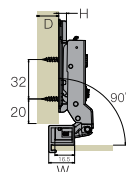
Reta



$H=W-D-2$

D \ W	19	20	21	22	23	24	
H	0	17	18	19	20	21	22

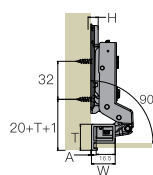
Alta



$H=W-D-11$

D \ W	19	20	21	22	23	24	
H	0	8	9	10	11	12	13

S. Alta



$H=W+A-20$

A \ W	19	20	21	22	23	24	
H	0	1	0	-1	-2	-3	-4